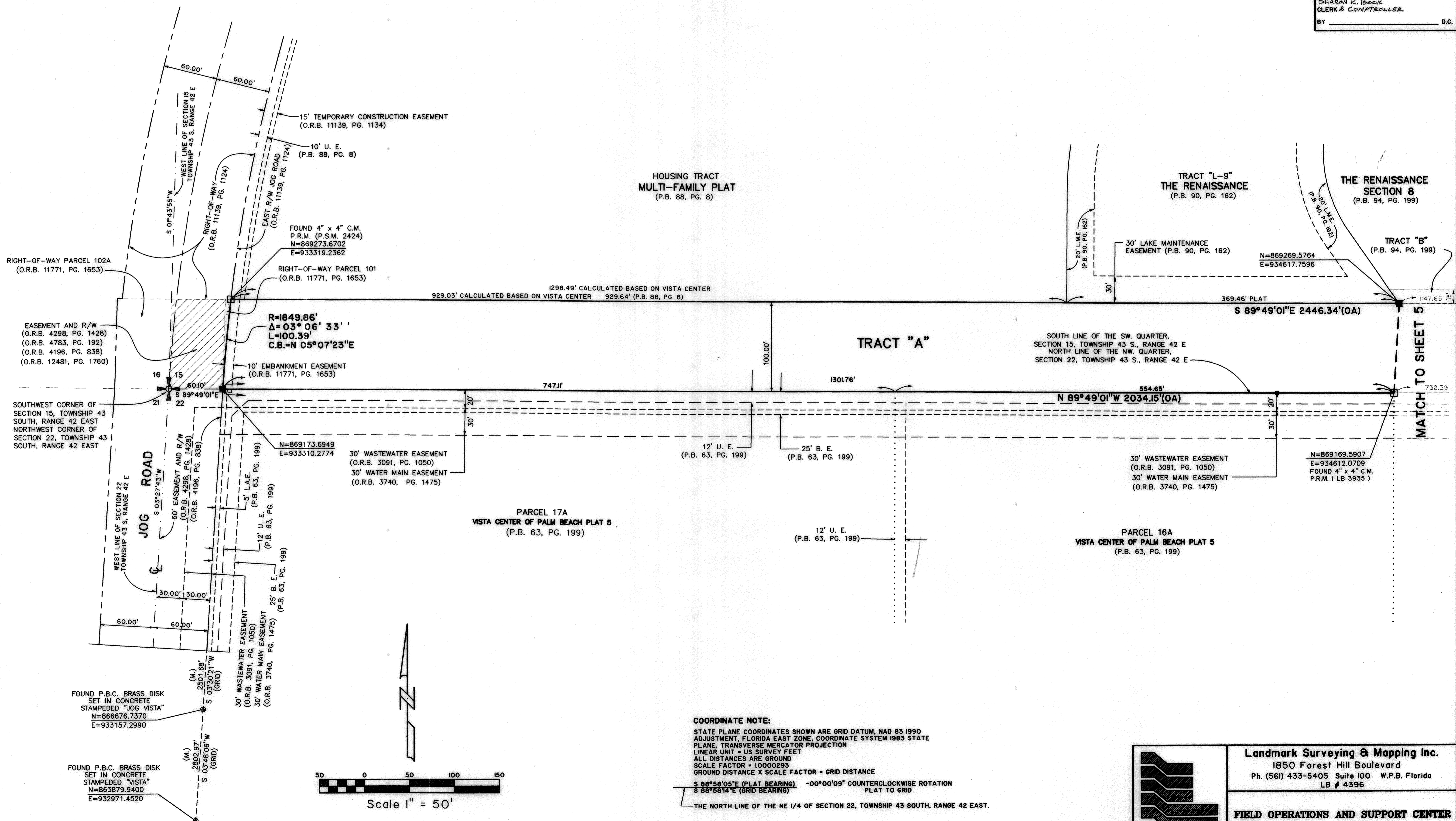
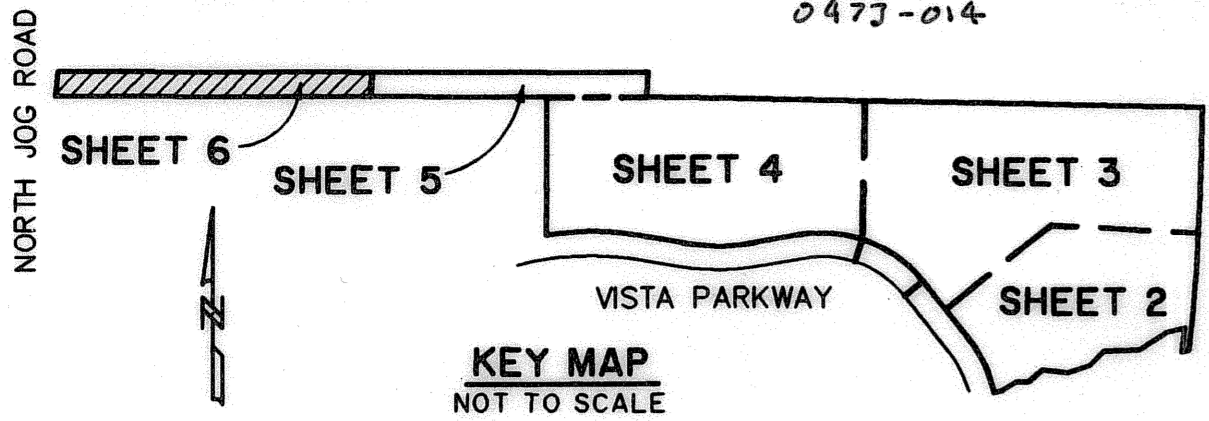


FIELD OPERATIONS AND SUPPORT CENTER

A PORTION OF A PLANNED INDUSTRIAL PARK DEVELOPMENT
BEING A PORTION OF SECTION 15, TOWNSHIP 43 SOUTH, RANGE 42 EAST, AND A
REPLAT OF PARCELS 10, 11, 12, 13 AND 14, VISTA CENTER OF PALM BEACH PLAT 3, AS RECORDED
IN PLAT BOOK 68, PAGES 128 THROUGH 134, PUBLIC RECORDS OF PALM BEACH COUNTY, FLORIDA.
LYING IN SECTIONS 15 AND 22, TOWNSHIP 43 SOUTH, RANGE 42 EAST, PALM BEACH COUNTY, FLORIDA.
SHEET 6 OF 6

110

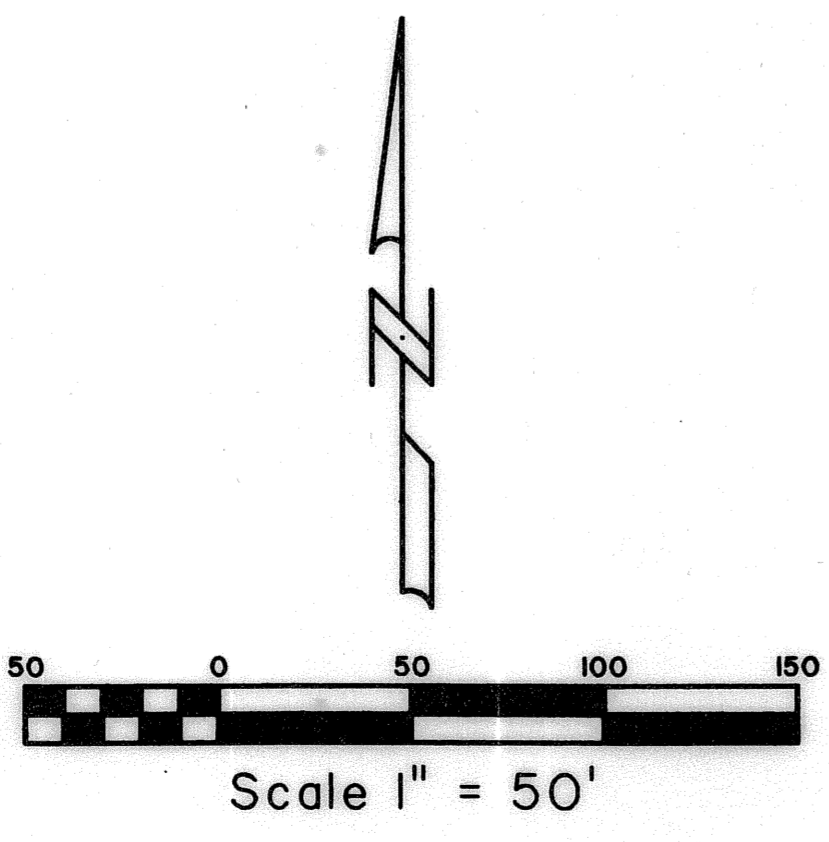
STATE OF FLORIDA SS
COUNTY OF PALM BEACH
THIS PLAT WAS FILED FOR RECORD AT _____
M, THIS _____ DAY OF _____ 2005
AND DULY RECORDED IN PLAT BOOK NO. _____
ON PAGE _____
SHARON R. BOCK
CLERK & COMPTROLLER
BY _____ D.C.



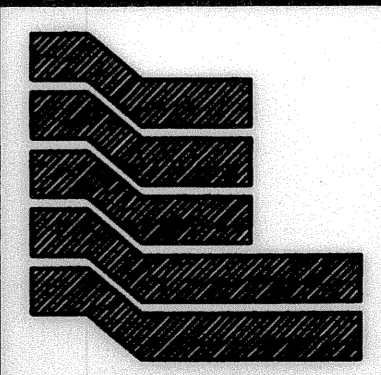
SUBDIVISION FIELD OPERATIONS AND SUPPORT CENTER
BOOK 105 PAGE 110
FLOOD ZONE A0 FLOOD MAP # 150 A
QUAD # 091 ZONING PFD
SE ZIP CODE 33411
TAZ 871
PUD NAME VISTA CENTER

FOUND P.B.C. BRASS DISK
SET IN CONCRETE
STAMPED "JOG VISTA"
N=866676.7370
E=933157.2990

FOUND P.B.C. BRASS DISK
SET IN CONCRETE
STAMPED "VISTA"
N=863879.9400
E=932971.4520



COORDINATE NOTE:
STATE PLANE COORDINATES SHOWN ARE GRID DATUM, NAD 83 1990
ADJUSTMENT, FLORIDA EAST ZONE, COORDINATE SYSTEM 1983 STATE
PLANE, TRANSVERSE MERCATOR PROJECTION
LINEAR UNIT - US SURVEY FEET
ALL DISTANCES ARE GROUND
SCALE FACTOR = 1.0000293
GROUND DISTANCE X SCALE FACTOR = GRID DISTANCE
S 88°58'05"E (PLAT BEARING) -00°00'09" COUNTERCLOCKWISE ROTATION
S 88°58'14"E (GRID BEARING) PLAT TO GRID
THE NORTH LINE OF THE NE 1/4 OF SECTION 22, TOWNSHIP 43 SOUTH, RANGE 42 EAST.



Landmark Surveying & Mapping Inc.
1850 Forest Hill Boulevard
Ph. (561) 433-5405 Suite 100 W.P.B. Florida
LB # 4396
FIELD OPERATIONS AND SUPPORT CENTER